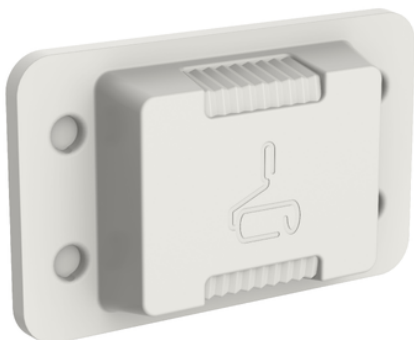


## Product data sheet

### Characteristics

# 3000PP/100

## Clipsal Iconic, Paint Protectors Translucent Green, 100 Pack



### Main

Range	Clipsal Iconic
Range of product	Iconic
Product or component type	Protective cover
Surface finish	Painted
Colour tint	Translucent Green

### Complementary

Width	115.6 mm
Height	71.4 mm
Depth	22.3 mm

### Packing Units

Unit Type of Package 1	PCE
Number of Units in Package 1	1
Package 1 Height	0.4 cm
Package 1 Width	2.5 cm
Package 1 Length	6.7 cm
Package 1 Weight	1 g

### Offer Sustainability

REACH Regulation	<a href="#">REACH Declaration</a>
EU RoHS Directive	Compliant with Exemptions
China RoHS Regulation	<a href="#">China RoHS Declaration</a>
RoHS exemption information	<a href="#">Yes</a>

The information provided in this documentation contains general descriptions and/or technical characteristics of the performance of the products contained herein. This documentation is not intended as a substitute for and is not to be used for determining suitability or reliability of these products for specific user applications. It is the duty of any such user or integrator to perform the appropriate and complete risk analysis, evaluation and testing of the products with respect to the relevant specific application or use thereof. Neither Schneider Electric Industries SAS nor any of its affiliates or subsidiaries shall be responsible or liable for misuse of the information contained herein.