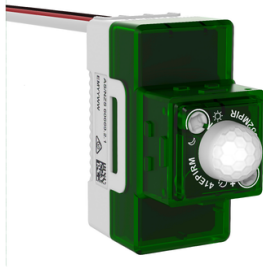


Product datasheet

Specifications

CLIPSAL



PIR Motion Sensor Mechanism, Clipsal Iconic

41EPIRM-TN

Main

range of product	Clipsal Iconic
Product brand	Clipsal
Product or component type	Movement detector
Function of module	Motion detection
Device application	Power circuit application Lighting
Sensor type	PIR

Complementary

Provided equipment	Carrier (plastic) Finishing accessory
[Ue] rated operational voltage	220/240 V AC 50 Hz 25 °C
Power consumption in W	1 W at 240 V AC 50 Hz
Maximum load current	3 A for per output
Rated power in W	100 W LED lighting 750 W incandescent 100 W fluorescent 400 W LV halogen 100 W motor
Protection type	Input surge protection for sensor
Electrical insulation class	Double insulation
Type of setting	Time adjustment: 20...900 s
Light intensity adjustment	10...2000 lux
Movement detection area	5 m
Detection angle	100° horizontal 82° vertical
Material	Plastic
Device mounting	Wall mounted
Mounting height	1.2 m
Type of installation	Indoor installation
width	48.5 mm
Height	23.5 mm
Depth	49 mm
Embedding depth	41 mm

Environment

IP degree of protection	IP20 (modular enclosure) conforming to IEC 60529
Ambient air temperature for operation	-10...50 °C
Ambient air temperature for storage	-20...60 °C
Standards	AS/NZS 60669.2.1
Relative humidity	5...90 % non-condensing

Packing Units

Unit Type of Package 1	PCE
Number of Units in Package 1	1
Package 1 Height	3.8 cm
Package 1 Width	6.8 cm
Package 1 Length	8.8 cm
Package 1 Weight	78.0 g

Environmental Data

Schneider Electric aims to achieve Net Zero status by 2050 through supply chain partnerships, lower impact materials, and circularity via our ongoing “Use Better, Use Longer, Use Again” campaign to extend product lifetimes and recyclability.

[Environmental Data explained >](#)

[How we assess product sustainability >](#)

Environmental footprint

Carbon footprint (kg.eq.CO2 per CR, Total Life cycle)	39
---	----

Environmental Disclosure	Product Environmental Profile
--------------------------	---

Use Better

Materials and Substances

Packaging made with recycled cardboard	Yes
--	-----

Packaging without single use plastic	No
--------------------------------------	----

EU RoHS Directive	Compliant with Exemptions
-------------------	---------------------------

REACH Regulation	REACH Declaration
------------------	-----------------------------------

China RoHS Regulation	China RoHS declaration
-----------------------	--

Use Again

Repack and remanufacture

Circularity Profile	End of Life Information
---------------------	---

Take-back	No
-----------	----