

RESPG8-SQWH
RESPG150SQWH



RESPG8-RNWH



RESPG250RNWH

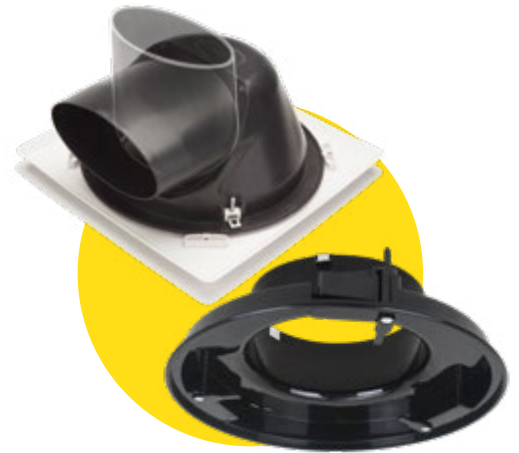
NEW AND
IMPROVED 10"
ROUND WHITE
GRILLE



RESPG8-SQBK
RESPG150SQBK



RESPG8-RNBK
RESPG150RNBK



See page 77 for grille to duct connector
& ceiling grille with clip-in spigot.

RAPID RESPONSE

GRILLES



The stylish Rapid Response Grilles have a contemporary design and are available in a white or black finish.

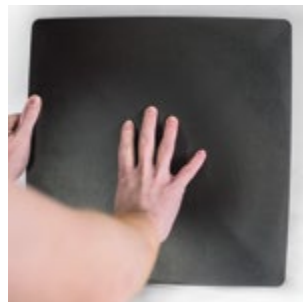
- Available in Round and Square models.
- Available in 2 sizes to suit 8" and 10" Rapid Response header box fan models.
- Stylish, contemporary design.
- Quick & easy to install.
- Can be retrofitted to a previously installed Rapid Response Fan.
- Square grilles can be easily rotated to align with walls.



Round Grille Installation**

Pinch the ends of the metal spring clips together.

Feed the clips through the small slots on either side of the fan body.

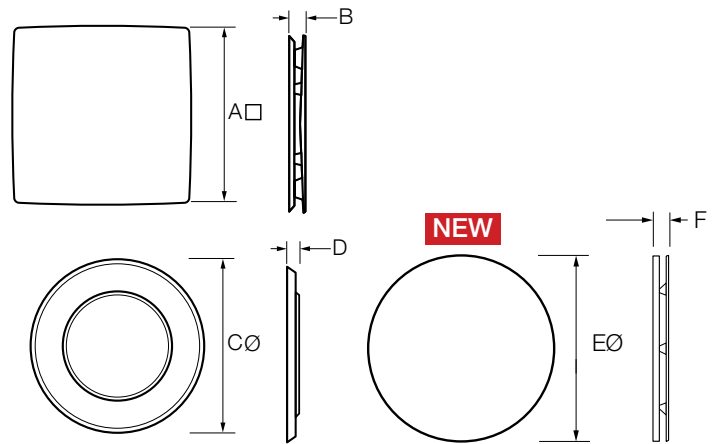


Square Grille & NEW 10" round white grille Installation

Push the grille onto the base of the fan until the clips click into place.

Rotate the grille to the desired position.

DIMENSIONS



MODEL NO.	GRILLE	A	B	C	D	E	F
RESPG8-SQWH	8" Square Grille White Finish	300	28	-	-	-	-
RESPG8-RNWH	8" Round Grille White Finish	-	-	294	19	-	-
RESPG8-SQBK	8" Square Grille Black Finish	300	28	-	-	-	-
RESPG8-RNBK	8" Round Grille Black Finish	-	-	294	19	-	-
RESPG150SQWH	10" Square Grille White Finish	353	30	-	-	-	-
RESPG250RNWH	10" Round Grille White Finish	-	-	-	-	353	30
RESPG150SQBK	10" Square Grille Black Finish	353	30	-	-	-	-
RESPG150RNBK	10" Round Grille Black Finish	-	-	332	24	-	-

All dimensions in mm

*Conditions apply. For details visit: fantechtrade.com.au/warranty
**Excluding new RESPG250RNWH model.